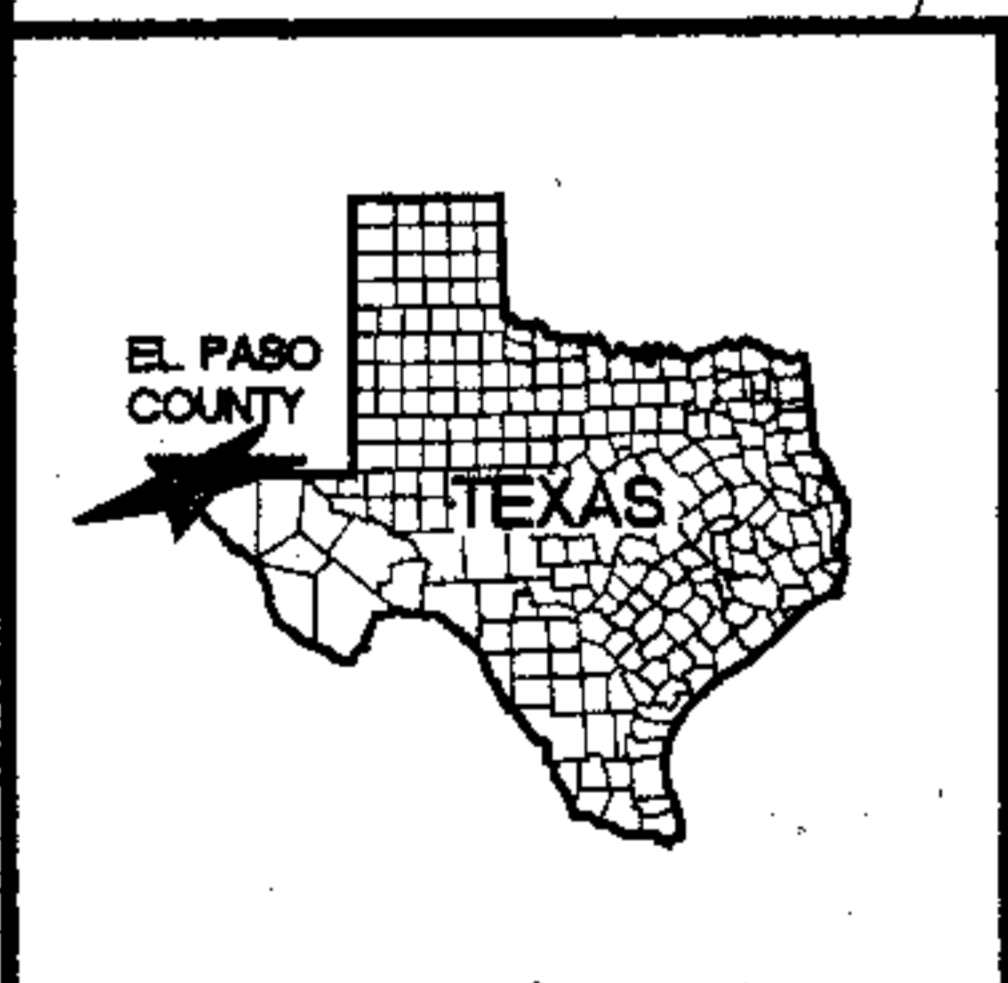
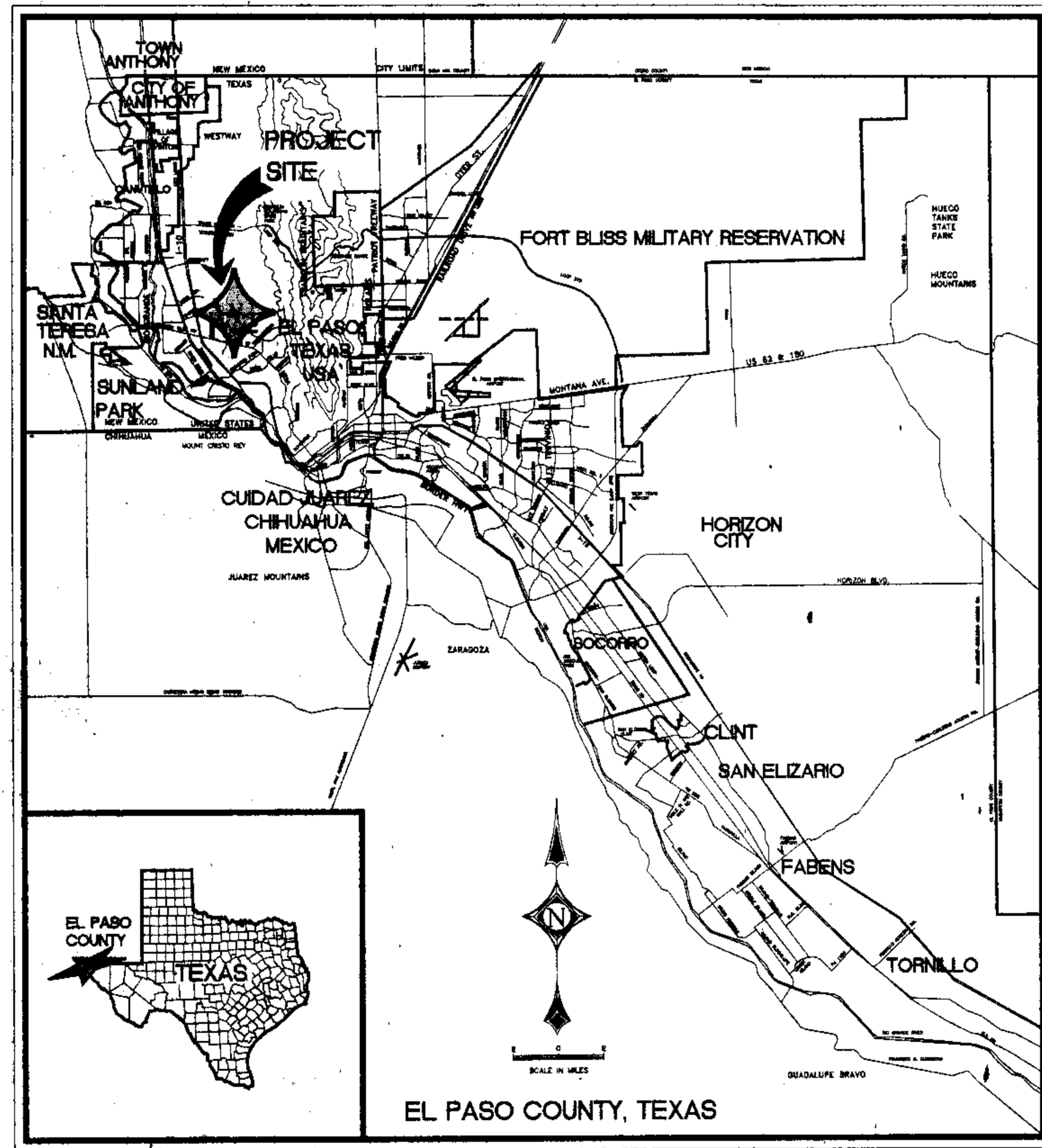


BOULDER CANYON SUBDIVISION

BEING ALL OF LOT 41, BLOCK 100
 CHAPARRAL PARK UNIT 22, REPLAT "A"
 CITY OF EL PASO, EL PASO COUNTY, TEXAS

VICINITY MAP



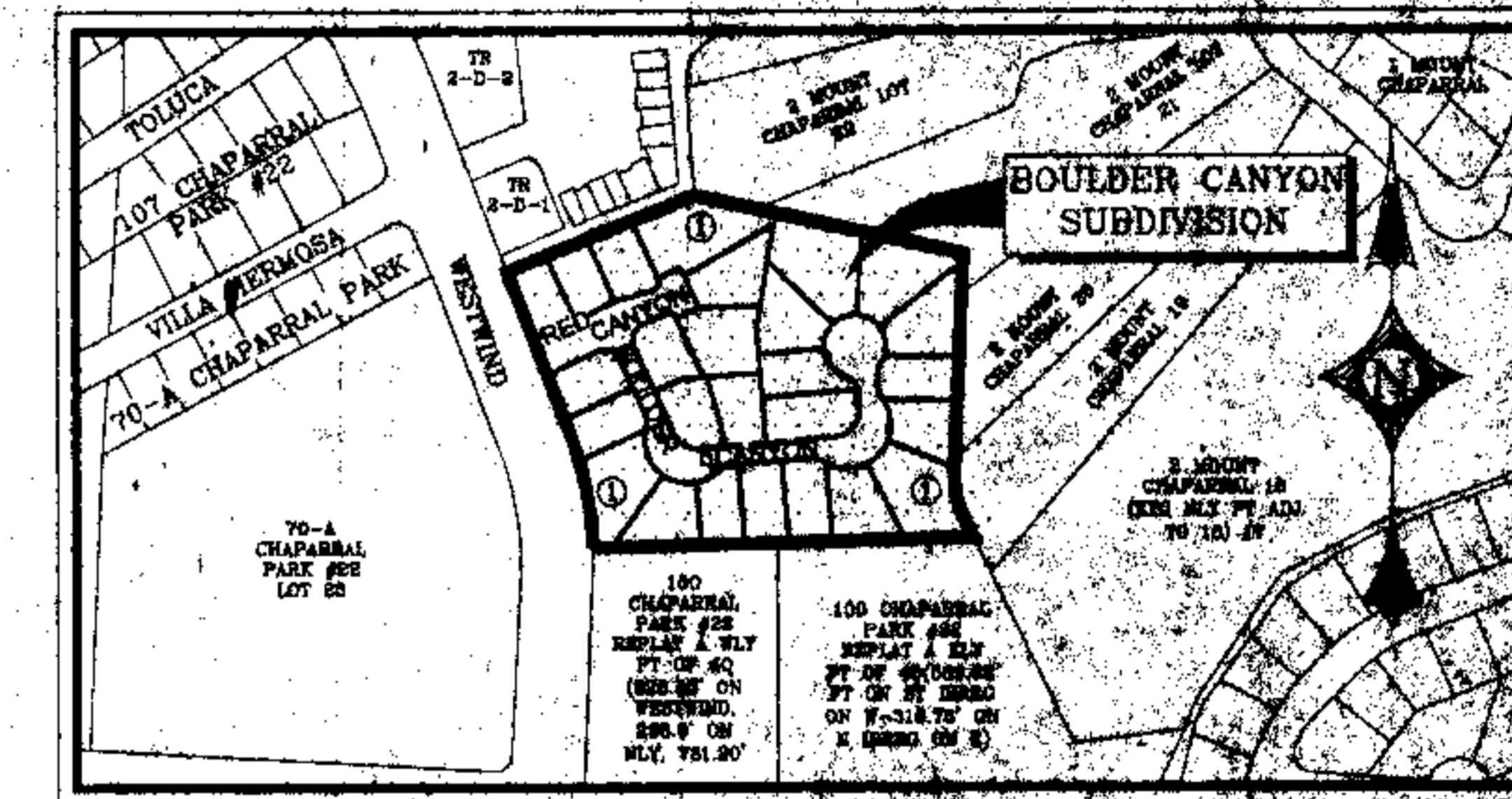
EL PASO COUNTY, TEXAS

LAND SURVEYOR

CONTAINING:
 313,899.61 SQ. FT.
 OR 7.2061 ACRES±

INDEX SHEET

- COVER
- FINAL PLAT
- A-01 GATE PROFILE
- C-01 GRADING PLAN
- C-02 DRAINAGE PLAN
- C-03 SWPPP
- C-04 SWPPP DETAILS
- C-05 ILLUMINATION
- C-06 ILLUMINATION DETAILS
- C-07 TYPICAL DETAILS
- C-08 TYPICAL DETAILS
- C-09 STORMWATER DETAILS
- C-10 MANHOLE DETAILS
- C-11 RED CANYON LANE
- C-12 BOULDER CANYON PROFILE
- C-13 SECTIONS
- C-14 EXISTING STORMSEWER PROFILE
- C-15 PROPOSED STORMSEWER PROFILE
- C-16 PROPOSED STORMSEWER PROFILE
- S-01 STRUCTURAL DETAILS



LOCATION MAP

SCALE: 1"=300'

DEVELOPMENT SERVICES DEPARTMENT
 SITE PLAN REVIEW
 Reviewed For Compliance For Conditions Related To:
 Demolition Only
 Grading & Drainage
 Wheelchair Ramps
 On-Site Parking Layout
 Sidewalks
 Driveways
 Retaining Rock Walls
 On-Site Pooling of Storm Waters

Consent of Most City Council Members For Submittal For
 BY: [Signature] DATE: 12/20/07

Plans prepared by:
 CIVIL ENGINEER



SECO 1071 COUNTRY CLUB RD., SUITE M
 EL PASO, TX 79932
 TEL(915) 585-1227 FAX(915) 585-0825

DRE Del Rio Engineering, Inc.
 P.O. Box 220251 El Paso, Texas 79913 915/834-2400

BOULDER CANYON SUBDIVISION (J06-063)

2008 WORK DIRECTORY, 005-008 Boulder Canyon (J06-063) COVERING Dec 10, 2007